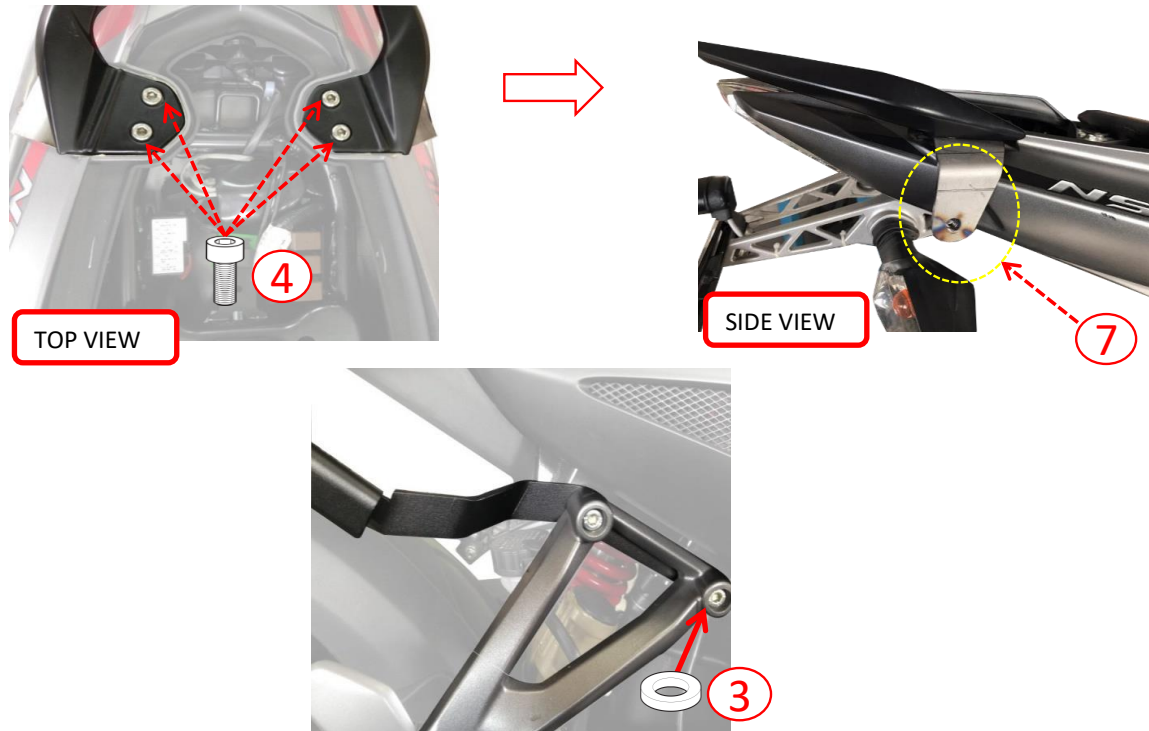


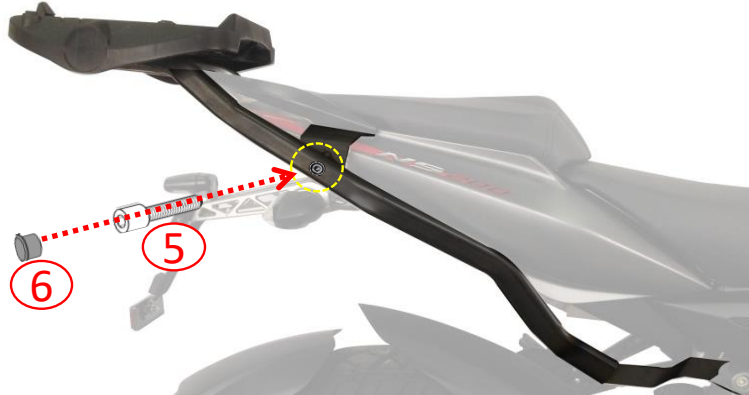
# HRV-PULSAR NS200/NS160(19)

## MODENAS PULSAR NS200/NS160(19)



1

Dismantle handle grab bar with sup.joint and footrest to install rack.



2

Install base plate and tight all the screw.

No.	Parts Description	Quantity (pcs)
1	HEAVYDUTY RACK ( Part No. PW0171L & PW0171R)	1 PAIR
2	BASE PLATE ( Part No. M5M / M5MK )	1 SET
3	COLLAR C18X8X4 ( Part No. C1802 )	2 PCS
4	ALLEN CAP SCREW ( Part No. M8X30AC )	4 PCS
5	ALLEN CAP SCREW ( Part No. M8X25AC )	2 PCS
6	M8CAP ( Part No. Z801 )	2 PCS
7	SUP.JOINT HRV-PULSAR NS200/NS160(19) ( Part No. HRSJ171(L)/(R) )	1 PAIR

### MOUNTING INSTRUCTIONS