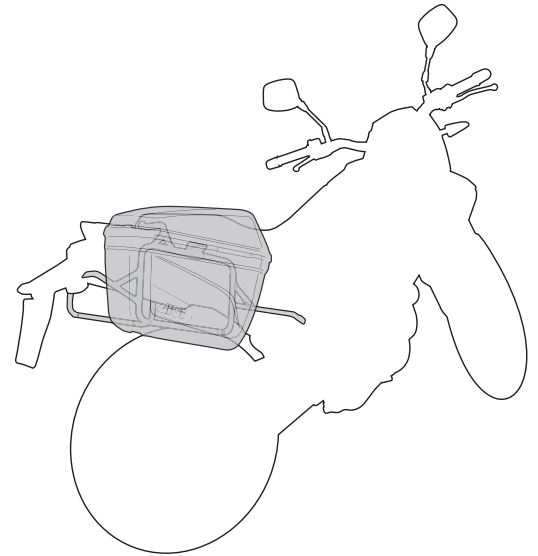
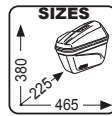
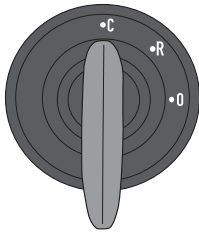


# E22N

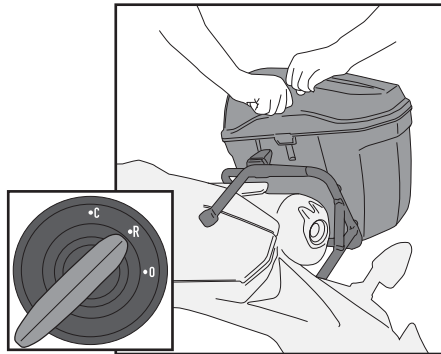
BAULETTO LATERALE MONOKEY - MONOKEY SIDE CASE - VALISES LATÉRALES MONOKEY  
MONOKEY SEITENKOFFER - MALETA TRASERA MONOLOCK - MALA TRASEIRA MONOLOCK



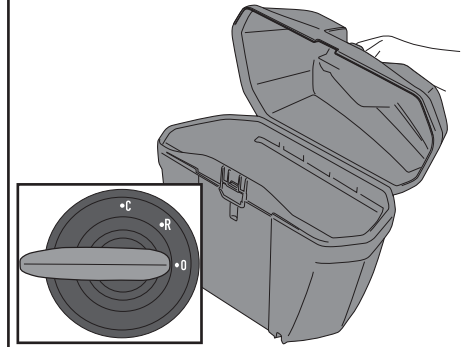
**CLOSED**



**RELEASE**



**OPEN**



PER APRIRE IL BAULETTO - TO OPEN THE CASE - POUR OUVRIR LE TOP CASE - UN DEN KOFFER ZU ÖFFNEN - PARA ABRIR EL BAÚL - A ABRIR A MALA

INSERIRE LA CHIAVE NELLA SERRATURA;  
RUOTARLA DI 90°, SULLA POSIZIONE "O";  
APRIRE IL COPERCHIO DEL BAULETTO;

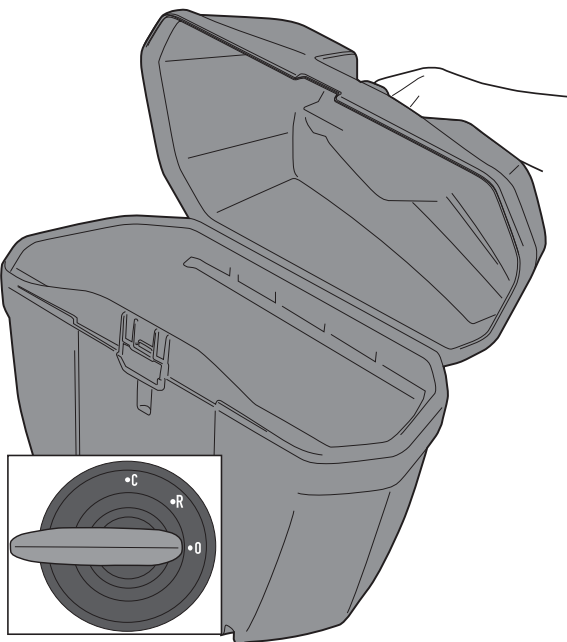
INSERT THE KEY IN THE LOCK;  
TURN IT 90° IN "O" POSITION;  
OPEN THE CASE;

INSÉREZ LA CLÉ DANS LA SERRURE  
LA TOURNER DE 90° EN POSITION "O";  
OUVRIR LE COUVERCLE DU COFFRE

STECKEN SIE DEN SCHLÜSSEL IN DAS SCHLOSS;  
DREHEN SIE IHN UM 90°, BIS ZUR POSITION "O";  
ÖFFNEN SIE DEN KOFFERDECKEL;

INTRODUCIR LA LLAVE EN LA CERRADURA;  
GIRE 90° EN LA POSICIÓN "O";  
ABRA LA CAJA;

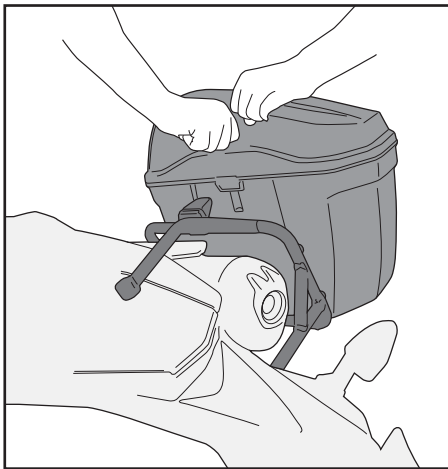
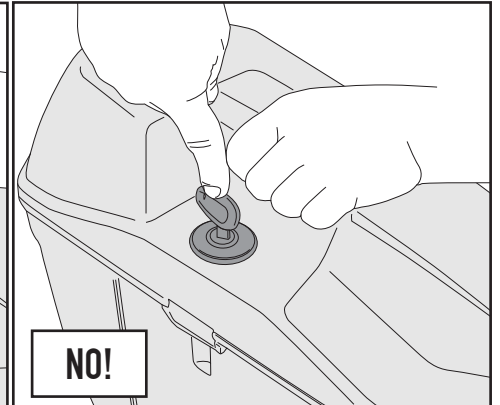
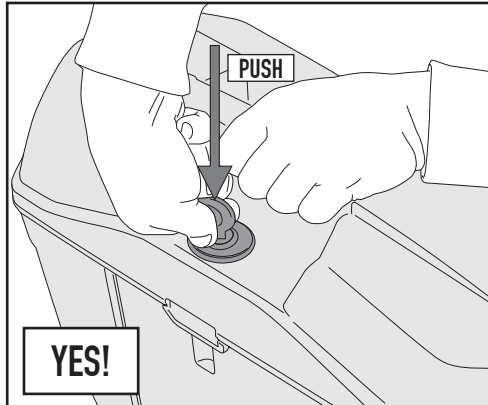
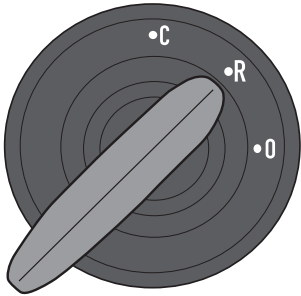
INSIRA A CHAVE NA FECHADURA;  
VIRE 90° PARA A POSIÇÃO "O";  
ABRA A CAIXA;



# E22N

## BAULETTO LATERALE MONOKEY - MONOKEY SIDE CASE - VALISES LATÉRALES MONOKEY MONOKEY SEITENKOFFER - MALETA TRASERA MONOLOCK - MALA TRASEIRA MONOLOCK

SGANCIO VALIGIA - RELEASE OF THE PANNIER - ABNEHMEN DES KOFFERS - RETRAIT DE LA VALISE  
EXTRACCIÓN DE LA ALFORJA - LIBERAÇÃO DO BAÚ LATERAL



INSERIRE LA CHIAVE NELLA SERRATURA;  
RUOTARLA DI 45°, SULLA POSIZIONE "R";  
PREMERE LA CHIAVE STESSA;  
SGANCIARE IL BAULETTO;

INSERT THE KEY IN THE LOCK;  
TURN IT 45° IN "R" POSITION;  
PUSH THE KEY;  
DETACH THE CASE;

INSÉREZ LA CLÉ DANS LA SERRURE;  
LA TOURNER DE 45°, EN POSITION "R";  
APPUYER SUR LA CLÉ PUIS;  
OUVRIR LE TOP CASE;

STECKEN SIE DEN SCHLÜSSEL IN DAS SCHLOSS;  
DREHEN SIE IHN UM 45°, BIS ZUR POSITION "R";  
DRÜCKEN SIE DEN DRUCKKNOPF;  
NEHMEN SIE DEN KOFFER AB;

INSERTE LA LLAVE EN LA CERRADURA;  
GIRE LA LLAVE DE 45°, EN LA POSICIÓN "R";  
EMPUJE LA LLAVE;  
LIBERAR LA MALETA;

INSIRA A CHAVE NA FECHADURA;  
GIRE A CHAVE DE 45°, NA POSIÇÃO "R";  
PRESSIONE A TECLA;  
LIBERAR A MALA;

AGGANCIO VALIGIA - ATTACHMENT OF THE BAG - ACCROCHAGE DE LA VALISE - BEFESTIGUNG DES KOFFERS  
COLGAR LA MALETA - PENDURAR A MALA

