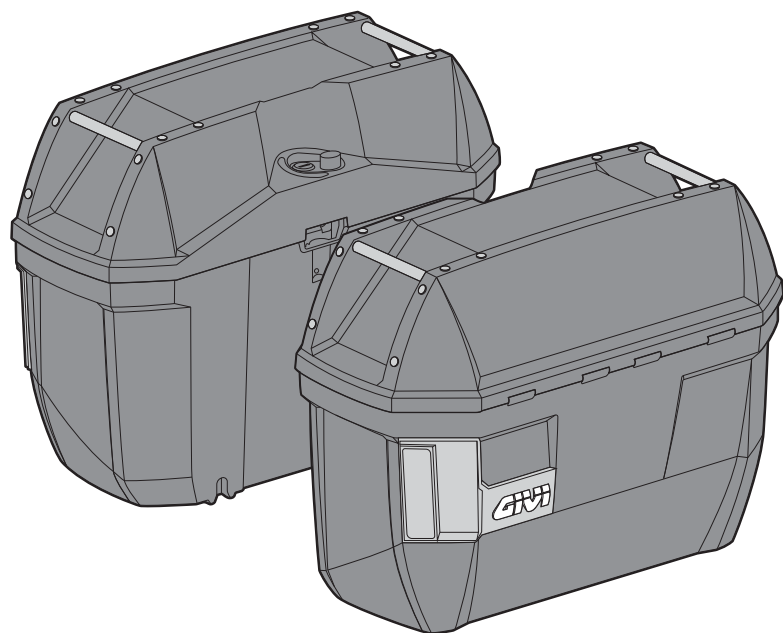


# E23

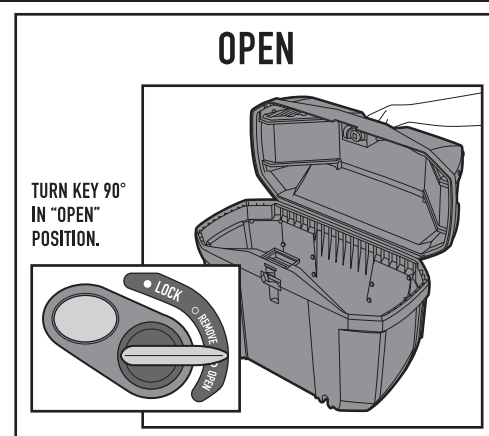
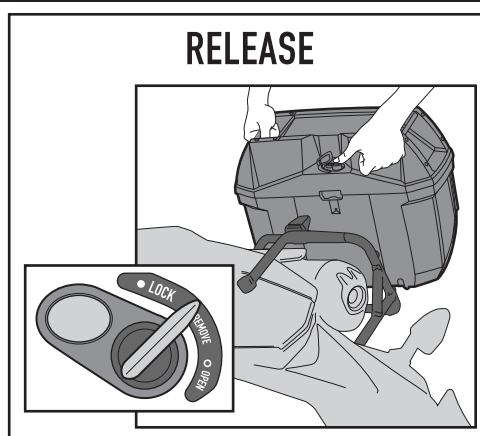
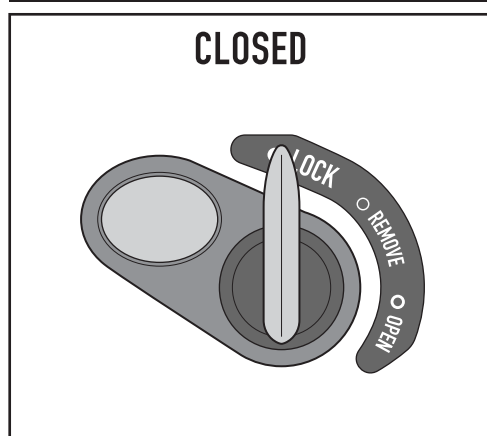
## MONOKEY SYSTEM SIDE CASE



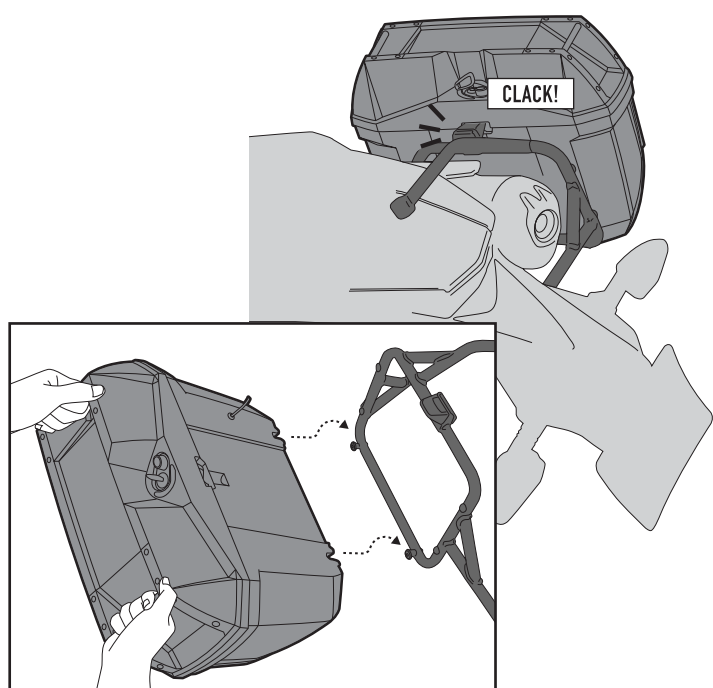
MAX LOAD <b>3 kg</b>	VOLUME <b>23lt</b>	SIZES 356 221 468	TECHNOLOGY MONOKEY SYSTEM
-------------------------	-----------------------	----------------------------	------------------------------

**3Kg MAX**

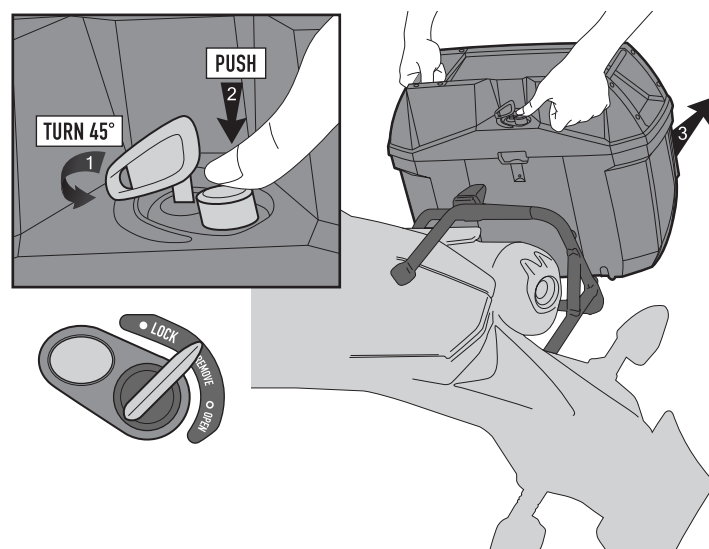
**110Km/h MAX**



### ATTACHING THE CASE



### REMOVING THE CASE



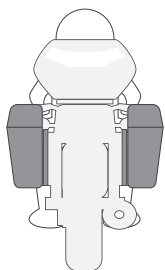
**IMPORTANT!**  
PLEASE ENSURE THAT THE SIGNAL LIGHT WIRE\* IS DISCONNECTED FROM THE MOTORCYCLE BEFORE REMOVING THE CASE.

\* FOR SPECIFIC MODELS

# E23

## MONOKEY SYSTEM SIDE CASE

### SAFETY GUIDELINES



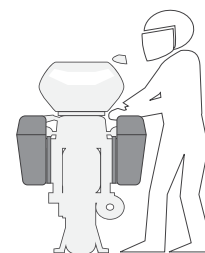
PLEASE TAKE NOTE OF THE FOLLOWING SAFETY GUIDELINES TO AVOID UNNECESSARY RISKS OR DAMAGE TO YOUR MOTORCYCLE. OUR FITTING KITS ARE MADE OF VARIOUS COMPONENTS OF WELDED METALS AND JOINTS WHICH MIGHT POSE ASSEMBLING PROBLEMS DUE TO DIFFERENT CHASIS STRUCTURES.

- RELY ON QUALIFIED MECHANICS TO INSTALL THE FITTING KITS.
- CHECK BIKE FOR FRAME DAMAGE OR BENDING BEFORE INSTALLING.
- COMPONENTS DO NOT INTERFERE OR OBSTRUCT THE FUNCTIONS OF : SHOCK ABSORBERS / CHAINS AND SPROCKETS / SILENCERS ETC.
- DO NOT REUSE DAMAGED CASES OR FITTING KITS.
- NEVER MODIFY THE ORIGINAL FITTING KITS OR COMPONENTS.
- IF IN DOUBT ALWAYS CONTACT THE MANUFACTURER OR DEALER.
- FOR SAFETY PURPOSE, GIVI BOX MUST BE FITTED TO GENUINE GIVI RACK.
- WHEN RIDING IN A NARROW SPACE, PAY ATTENTION TO THE WIDTH OF THE MOTORCYCLE AS THE WIDTH WILL INCREASE CONSIDERABLY ONCE PANNIERS HAVE BEEN FITTED.

\* WARRANTY COULD BE VOID IF THE BOX IS NOT FITTED TO GIVI GENUINE PARTS.

### SAFETY CHECKS PRE-RIDE

- BEFORE RIDING\_CHECK BOX IS PROPERLY SECURED AND LOCKED BY TUGGING.
- PROCEDURE FOR LOCKING\_SEE PAGE 1.
- DO NOT OVERLOAD\_MAX. 3 KG ALLOWED.
- ALWAYS KEEP THE KEY SECURELY.
- MAXIMUM GROSS WEIGHT WITH PILLION AND LUGGAGE\_DO NOT EXCEED WEIGHT AS RECOMMENDED BY MANUFACTURER.
- MAINTAIN A MAXIMUM SPEED OF 110 KM/HOUR WITH FULL LOAD.
- MOUNTING RACKS\_CHECK FOR LOOSE BOLTS AND NUTS\_MOUNTINGS TIGHT AND SECURE.
- CLEANING TIPS\_DO NOT USE SOLVENTS, PETROL OR CHEMICAL PRODUCTS\_USE WATER AND MILD SOAP.



### GIVI'S SBL- SIDE BAG HOLDER



SIDE BAG HOLDER (MONOKEY) FOR SPECIFIC MOTORCYCLE MODELS

**SBL SIDE BAG HOLDER RACK SYSTEM**  
WITH BUILT-IN ATTACHMENT CLAMP AND TWO FIXING POINTS ON THE HIGH PRECISION ROBOTIC WELDED METAL PARTS, RECEIVE THE DISENGAGEMENT MOVEMENT FROM THE CASE RELEASE BUTTON AND DETERMINE A SIGNIFICANT AND FURTHER INCREASE IN OVERALL STABILITY. DESIGNED TO FIT VARIOUS HIGH CAPACITY BIKES AND COMPLEMENTING OUR RANGE OF SIDE PANNIERS, THE PORTABILITY AND EXTRA STORAGE CAPACITY WILL DEFINITELY LESSEN THE RIDER'S HASSLE OF SETTING OFF ON A LONG JOURNEY, BUT RATHER ENHANCE HIS PURSUIT OF DISCOVERY AND ADVENTURE.

